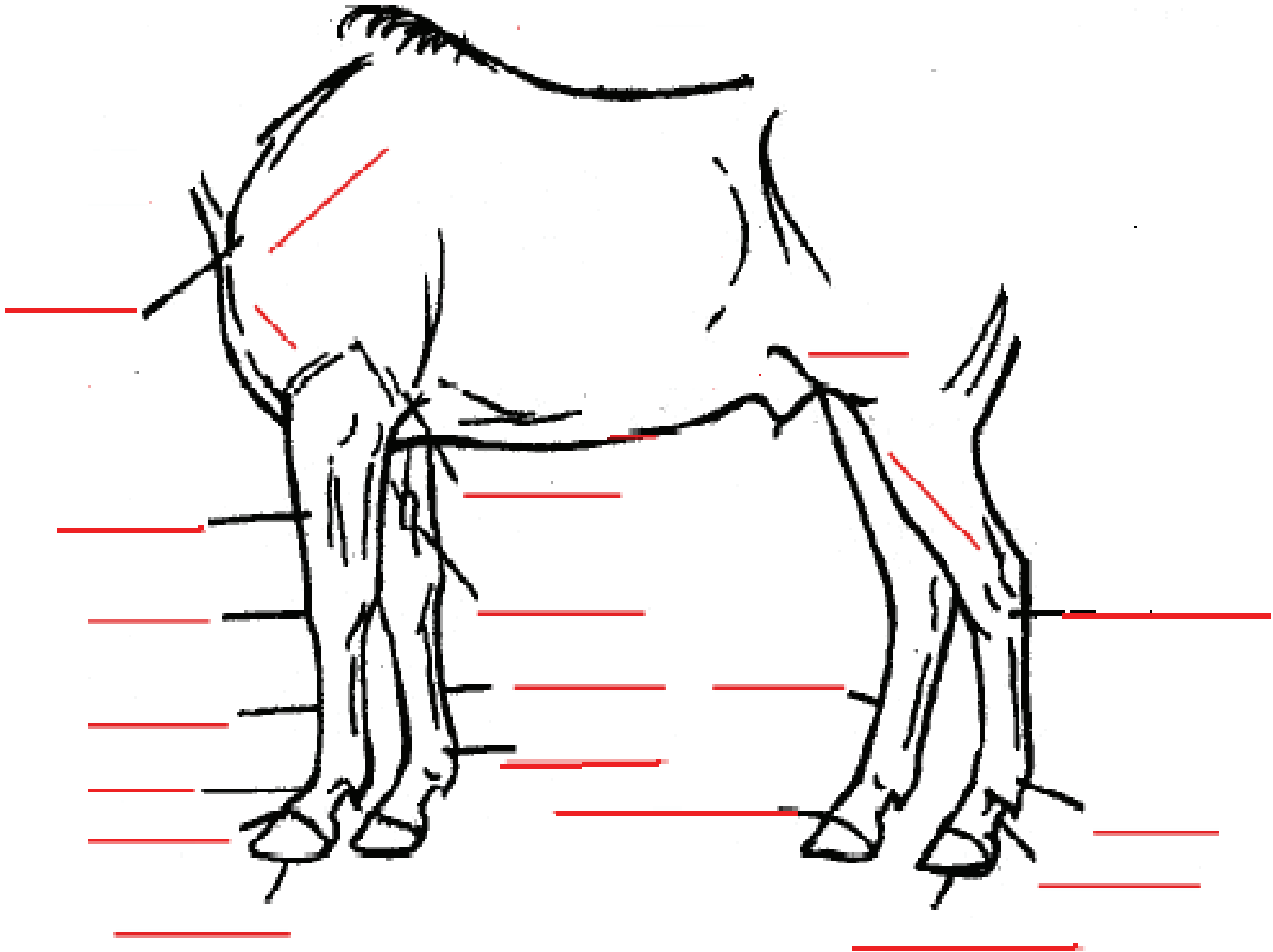


Stations Phase: Horse Parts—Legs

Directions: Work as a team and place the Name Tag of the horse part on the picture in it's proper location. Some parts are listed twice. 1 point for each correct answer.



Stations Phase Simulation—Horse Parts—Legs

Directions:

- Print the first page on light colored card stock paper.
- Print this second page on a different color of card stock.
- Cut out the Horse Part Name Tags
- Separate students into groups of 3 or 4
- Give a brief review of the Stations Phase (work as a team, time limit, allowed to talk to each other, allowed to touch items on the table)
- Give the team 4 or 5 minutes for this Station.

(Answer Key on the next page)

Shoulder
Point of Shoulder
Forearm
Knee
Cannon bone
Pastern
Coronary band
Hoof
Elbow
Chestnut
Tendons
Fetlock joint
Coronary band
Cannon bone
Stifle
Gaskin
Hock
Hoof
Pastern
Fetlock joint
Arm

Stations Phase: Horse Parts—Legs—Answer Key

